

# What do you know about the SPP/APR Indicators

IDEA DATA & RESEARCH  
SPECIAL EDUCATION DATA SUMMIT  
SESSION 3

How many indicators are part of the SPP/APR



▲ 14

◆ 20

● 17

■ 16

How many indicators are part of the SPP/APR



▲ 14



◆ 20



● 17



■ 16



# Indicator 1: Graduation is based on



▲ the ESSA four year cohort

◆ the ESSA five year cohort

● a single year event (July 1 through June 30)

■ Seniors in the December 1 child count

# Indicator 1: Graduation is based on



▲ the ESSA four year cohort



◆ the ESSA five year cohort



● a single year event (July 1 through June 30)



■ Seniors in the December 1 child count



Indicator 2: Drop Out uses the same data set as Indicator 1: Graduation



◆ True

▲ False

Indicator 2: Drop Out uses the same data set as Indicator 1: Graduation



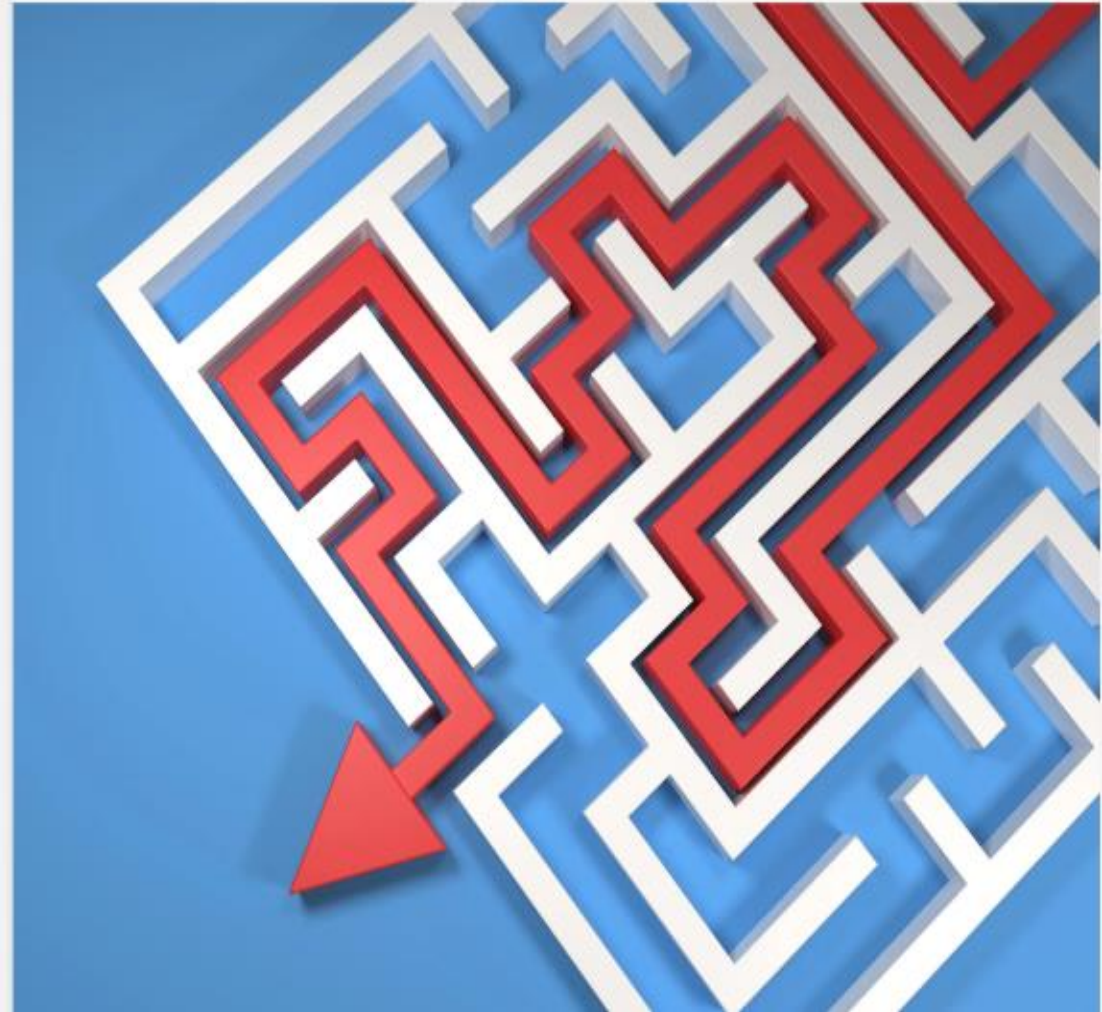
◆ True

▲ False

## Special Education Exits (14-21)

### What are the exit strategies for students?

- Indicator 1 & 2 are not rates; but a percentage of leavers (exitors) ages 14-21.
- How does your work facilitate a smooth exit strategy
- Is it a linear process or like the picture





# Which grades are reported within Indicator 3: Assessment?



▲ K-12

◆ 4, 8, and HS only

● 3-10

■ 3-12

# Which grades are reported within Indicator 3: Assessment?



▲ K-12



◆ 4, 8, and HS only



● 3-10



■ 3-12



## Indicator 3: Assessment

- SPP/APR focuses on Reading Language Arts and Math for grades 4, 8 and HS
- 4 areas: Participation, regular proficiency, alt. proficiency and regular proficiency gap.
- HS represents grade 9-10
- Future: HS will be alternate 9-10 and EOC grades 7-12



# Indicator 4: Discipline, looks for a significant difference between General and Special Education students with



▲ 10 days or less of OSS

◆ greater than 10 days of ISS

● 10 days or less of ISS

■ greater than 10 days of OSS

# Indicator 4: Discipline, looks for a significant difference between General and Special Education students with



▲ 10 days or less of OSS

◆ greater than 10 days of ISS

● 10 days or less of ISS

■ greater than 10 days of OSS

# Indicator 5: School Age Environments capture the percent of students



▲ In the regular classroom 80% or more of the day

◆ In the regular classroom less than 40% of the day

● Other settings: residential, day schools, hospital/homebound

■ all 3 are correct

# Indicator 5: School Age Environments capture the percent of students



▲ In the regular classroom 80% or more of the day

◆ In the regular classroom less than 40% of the day

● Other settings: residential, day schools, hospital/homebound

■ all 3 are correct

# Indicator 6: Preschool Environment - Arkansas has one of the highest preschool inclusion rates in the country



◆ True

▲ False



Indicator 6: Preschool Environment - Arkansas has one of the highest preschool inclusion rates in the country



True



False



There are 3 areas measured as part of Indicator 7: EC Outcomes. Which of the following is an outcome area?



Positive Social-Emotional Skills



Gross Motor Skills



Communication Skills



Fine Motor Skills



There are 3 areas measured as part of Indicator 7: EC Outcomes. Which of the following is an outcome area?



Positive Social-Emotional Skills



Gross Motor Skills



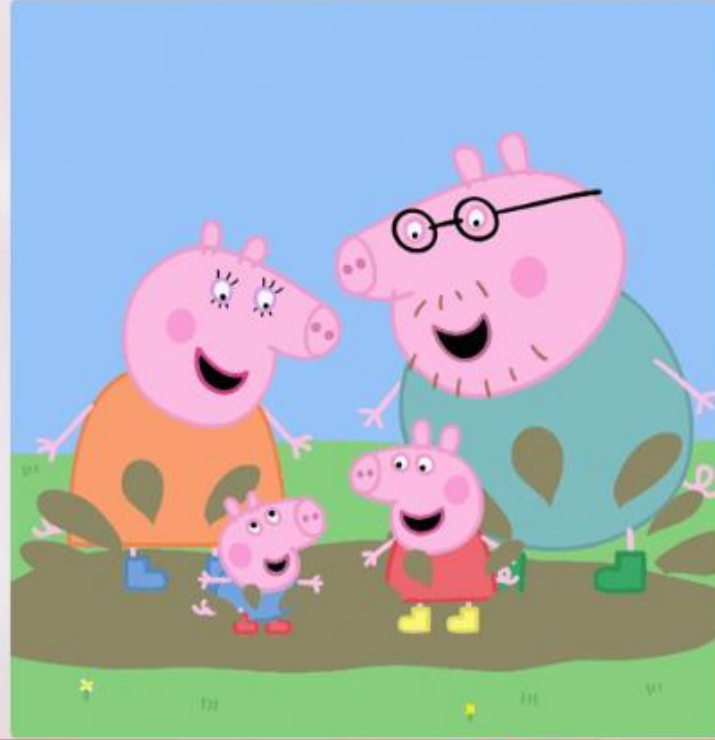
Communication Skills



Fine Motor Skills



Indicator 8: Family Involvement. How many different surveys does Arkansas use to collect data from families



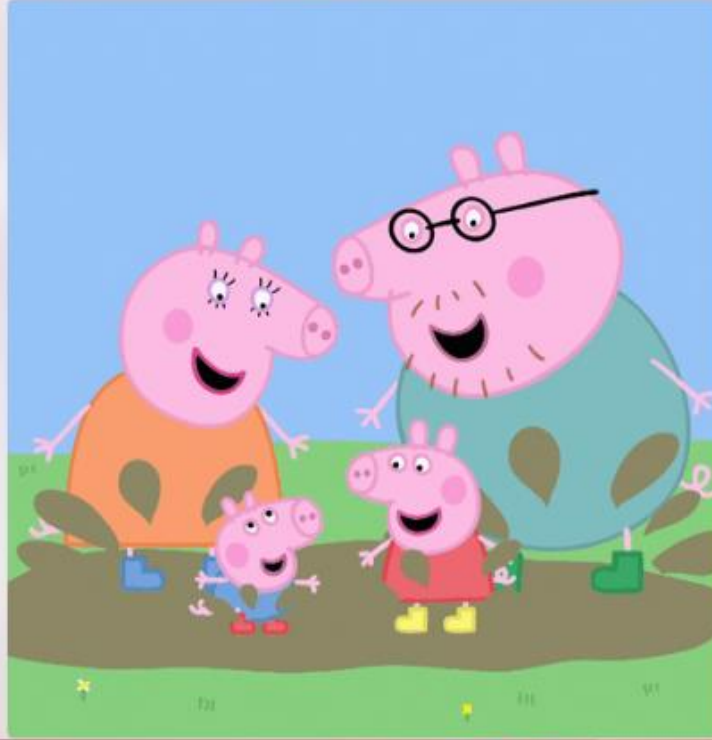
▲ 1

◆ 2

● 3

■ 5

Indicator 8: Family Involvement. How many different surveys does Arkansas use to collect data from families



1



2



3



5



Indicators 9 and 10: Disproportionality by race and disability. Which disability category is not part of Indicator 10?



▲ Intellectual Disability

◆ Emotional Disturbance

● Autism

■ Multiple Disabilities

Indicators 9 and 10: Disproportionality by race and disability. Which disability category is not part of Indicator 10?



▲ Intellectual Disability



◆ Emotional Disturbance



● Autism



■ Multiple Disabilities



Indicator 11: Child Find focuses on initial evaluations. The 60 day timeline for initial evaluation is based on



▲ School Days

◆ Calendar Days

● Business Days

■ Holiday days



Indicator 11: Child Find focuses on initial evaluations. The 60 day timeline for initial evaluation is based on



▲ School Days

◆ Calendar Days

● Business Days

■ Holiday days

Part C of IDEA serves children birth to 3 and the transition to Part B age 3-21 services is captured in which Indicator?



▲ Indicator 11

◆ Indicator 12

● Indicator 13

■ Indicator 6

Part C of IDEA serves children birth to 3 and the transition to Part B age 3-21 services is captured in which Indicator?



▲ Indicator 11



◆ Indicator 12



● Indicator 13



■ Indicator 6



## Indicator 13: Secondary Transition data is collected annually



▲ through MySped Resource

◆ through the state IEP system

● Through eSchool

■ through monitoring

# Indicator 13: Secondary Transition data is collected annually



▲ through MySped Resource



◆ through the state IEP system



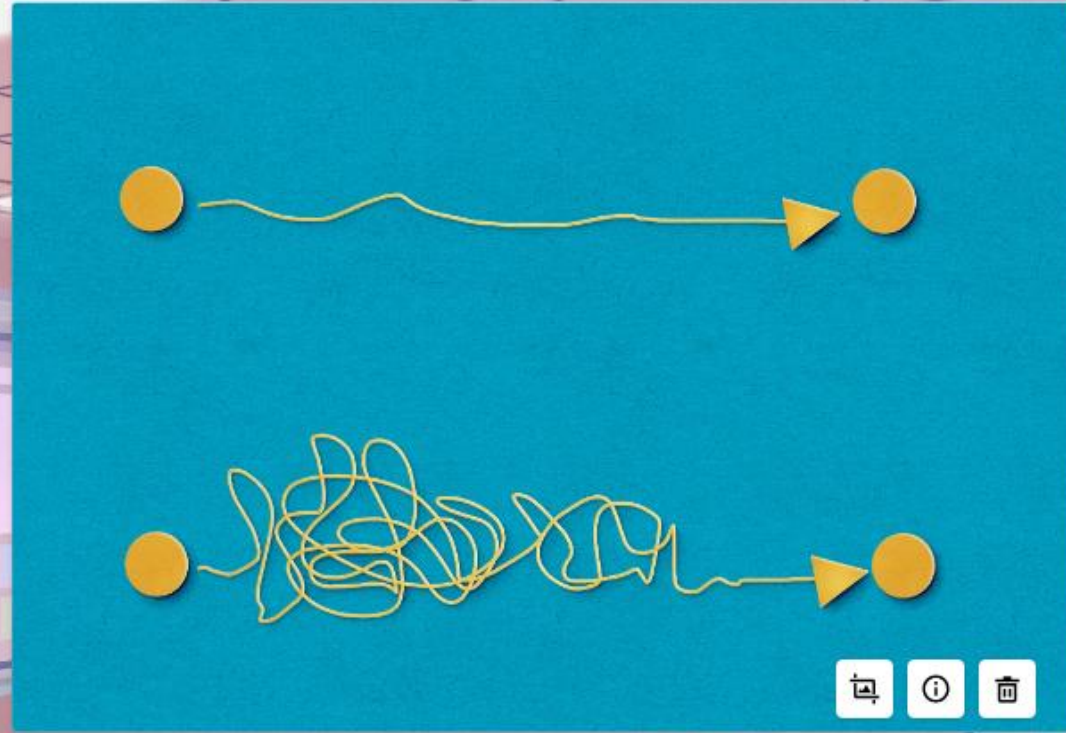
● Through eSchool



■ through monitoring



# Indicator 14: Post-school Outcomes data collection encompasses how many organizations



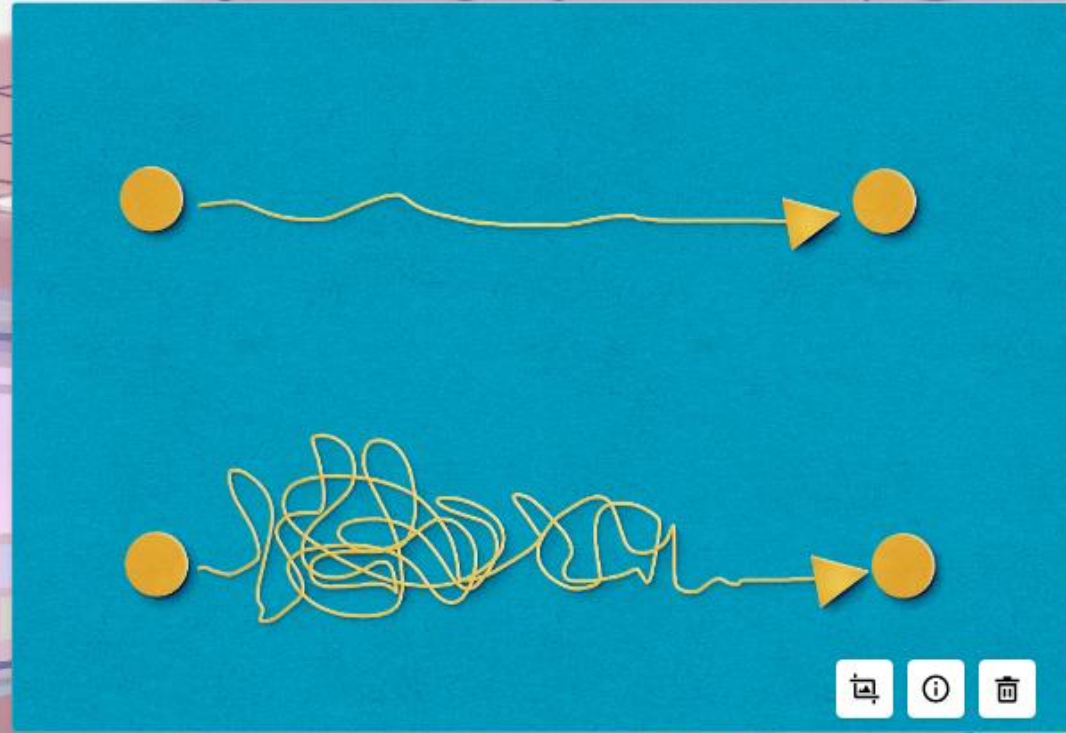
▲ 1

◆ 2

● 4

■ 5

# Indicator 14: Post-school Outcomes data collection encompasses how many organizations



▲ 1

◆ 2

● 4

■ 5

Which of the following is not reported as part of Indicator 15 or 16?



▲ Number of Hearings

◆ Number of Mediations held

● Number of Resolution sessions held

■ Number of Mediation agreements reached



Which of the following is not reported as part of Indicator 15 or 16?



Number of Hearings

Number of Mediations held

Number of Resolution sessions held

Number of Mediation agreements reached

# Who is the Coordinator of Indicator 17: State Systemic Improvement Plan



▲ Crystal Bethea

◆ Becky McIver

● Jeff Adams

■ Matt Sewell

# Who is the Coordinator of Indicator 17: State Systemic Improvement Plan



▲ Crystal Bethea



◆ Becky McIver



● Jeff Adams



■ Matt Sewell

